



Your valve made by ARI®
ari-armaturen.com

ALL GOOD THINGS COME IN **3S**

ZESA®/GESA® NEXTG3**N
FOR OPTIMISED PERFORMANCE
AT EVERY DIAMETER.**



ZESA®/GESA®
SINGLE SHAFT



ZESA®/GESA®
CURVED



ZESA®/GESA®
HEXO

ZESA®/GESA® NEXTG3N SOFT-SEALING BUTTERFLY VALVES

THE NEW GENERATION WITH MANY ADVANTAGES

For significant optimisation and a flow with less turbulence and vibration.

- Optimised disc in three different designs (single shaft, curved, HEXO honeycomb).
- The improved design of the liner contour ensures a firm fit inside the body, and both the disc and the liner are replaceable.
- A wide range of appropriately certified liner materials are available for a variety of applications and temperature ranges.
- The shaft end is designed as a square. Thanks to the standardised connection to ISO 5211, users profit from a simpler design with lock lever, gearbox and either an electric or a pneumatic actuator.
- Up to DN 200, the hollow spindle as a standard allows for an optional thermal gauge to be fitted.
- Blow-out protection according to DIN EN 593 and API609 is provided as standard in the form of a stem lock washer, which is screwed tight to the top flange.
- The connection between the shaft and the disc is designed as a form-fitting polygon for optimum torque transmission.

Optional special versions:

- Option 1 – Industrial version:
 - Robust and durable thanks to cast lever and metallic notched plate
 - Applications: e.g. outdoor installations
- Option 2 – Cold temperature version:
 - For use in temperature ranges down to -20°C
 - Body made from 5.3103 (EN-JS1049)
 - Screws and bracket made of stainless steel
 - Internal parts (stem and pivot) made of 1.4571
- Option 3 – Seawater execution:
 - Liner made from seawater-resistant NBR
 - Disc made from Superduplex (1.4469)

ZESA®/GESA® NEXTG3N PERFORMANCE FEATURES AT A GLANCE:

Construction:

- EPDM
 - for water, drinking water and water-glycol mixtures with DVGW registration for drinking water, -10 to +130°C
 - with ÖVGW registration for drinking water, PN 10, -10 to +130°C
- NBR
 - for water, oily media and compressed air with DVGW registration for gas, -10 to +80°C
 - with ÖVGW registration for gas up to DN 300, PN 10, -10 to +80°C
- FPM
 - for fluids and gases, 0 to +150°C (not for hot water)

Body material:

- Nodular cast iron 5.3106 (EN-JS1030)
- Optionally 5.3103 (EN-JS1049)

Pressure ratings:

- ZESA® PN 6/10/16
- GESA® PN 10/16

Nominal diameters:

- DN 20 to DN 600

Connections:

- Face-to-face according to DIN EN 558 FTF-20
- Flange connection according to DIN EN 1092-1/-2
- Top flange according to DIN EN ISO 5211
- Suitable for flared flanges according to DIN
- Flanges optionally also according to ANSI, JIS, BS



OPTIMISED SAFETY

Due to the polygon connection, stiffer disc and blow-out protection.



OPTIMISED FLOW

Due to the optimised disc design, leading to a shorter outlet section.



OPTIMISED EFFICIENCY

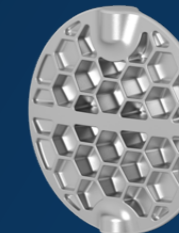
Due to the optimised Kvs values and ease of servicing, enabling more compact systems. Can be fully insulated.



Single Shaft Design
DN 20-50



Curved Design
DN 65-200



HEXO Honeycomb Design
DN 250-600



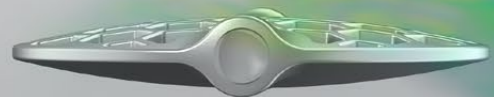
ZESA®/GESA® NEXTG3N

Soft-sealing butterfly valves

For more information on the ZESA®/GESA® NEXTG3N, please visit zesa-gesa-nextg3n.com

ALL GOOD THINGS COME IN 3S

The first soft-sealing butterfly valve with 3 optimised disc designs means less turbulent flow.



ZESA®/GESA® NEXTG3N

AREAS OF APPLICATION IN HVAC

- Air conditioning and cold water applications, e.g. in data centers
- Heating systems
- Drinking water systems
- Heat and cooling transfer stations



ZESA®/GESA® NEXTG3N

Soft-sealing butterfly valves

For more information on the ZESA®/GESA® NEXTG3N, please visit zesa-gesa-nextg3n.com

PRODUCT OVERVIEW

ZESA®/GESA® SINGLE SHAFT

DN 20 TO DN 50 – SINGLE SHAFT DESIGN

- Lower friction and pressure losses for optimised Kvs values.
- Optimised disc design means less turbulence and a shorter outlet section – just 2 x DN – downstream of the valve.
- Less turbulence also has the advantage of less noise and vibration in the system.
- Less dirt deposits.



ZESA®/GESA® CURVED

DN 65 TO DN 200 – INNOVATIVE CURVED DESIGN

- Lower friction and pressure losses for optimised Kvs values.
- Optimised disc design means less turbulence and a shorter outlet section – just 2 x DN – downstream of the valve.
- Less turbulence also has the advantage of less noise and vibration in the system.
- Less dirt deposits.
- The curved design is a registered design and as such is unique worldwide.
- The curved design results in increased stiffness and adds stability to the entire shaft-and-disc structure.



ZESA®/GESA® HEXO

DN 250 TO DN 600 – INNOVATIVE HEXO HONEYCOMB DISC DESIGN

- The HEXO honeycomb disc design is a registered design and as such is unique worldwide.
- Lower friction and pressure losses for optimised Kvs values.
- Optimised disc contour means less turbulence and a shorter outlet section – just 2 x DN – downstream of the valve.
- Less turbulence also has the advantage of less noise and vibration in the system.
- Less dirt deposits.
- Weight advantage of the new disc design simplifies handling in the system.
- The HEXO design results in increased stiffness and adds stability to the entire shaft-and-disc structure.



POLYGONAL SHAFT-DISC CONNECTION

Innovative & form-fitting: The polygonal shaft-disc connection for optimum torque transmission.

The connection between the shaft and the disc is designed as a form-fitting polygon for optimum torque transmission. The disc and liner are simple to replace because the polygon is self-cent-

ring and no additional fixing pin is required. A flat surface ensures the discharging of air when the shaft is inserted into the disc, for even easier installation.



BENEFITS FOR YOU

- **New polygonal connection guarantees maximum reliability.**
- **Designed as a form-fitting polygon for optimum torque transmission.**
- **Design rules out any notching effect.**
- **Easy servicing because the liner and disc are simple to replace.**

NEW!

With form-fitting, polygonal shaft-disc connection

THE STRONG TRIO FOR INDUSTRY

Optimised for even more challenging applications: ZESA®/GESA® butterfly valves in industrial design with cast lever and metallic notched plate

ARI butterfly valves ZESA®/GESA® in industrial version combine the advantages of the safe and robust ZIVA® industrial valve with the innovative product features of the optimised product range.

YOUR ADVANTAGES

- **Energy efficiency:**
Significantly better KVS values than those of the former ZESA®/GESA®/ZIVA® versions
- **Maximum process reliability:**
Shaft and disc are connected by a secure polygon
- **Optimised stability:**
Long service life thanks to optimised stability of the entire shaft and disc design
- **Better, corrosion-resistant coating:**
C3 instead of C2 coating based on DIN EN ISO 12944-5
- **Shaft end equipped with a square:**
The standardised connection form in accordance with ISO 5211 offers uncomplicated, subsequent installation of a control element
- **Better handling when replacing liner:**
Weight reduction for the large nominal sizes
- **Robust and durable for more demanding applications:**
Industrial version optionally with cast lever and metallic notched plate
- **Cold temperature version:**
Optional for temperatures down to -20°C



ZESA®/GESA® NEXTG3N AREAS OF APPLICATION IN INDUSTRY

- Compressed air systems
- Cooling loops in the process industry
- Combined heat and power plants
- Swimming pool technology
- Solar thermal systems
- Biogas plants
- Seawater applications
- Various industrial applications



ZESA®/GESA® NEXTG3N

Soft-sealing butterfly valves

For more information on the ZESA®/GESA® NEXTG3N, please visit [zesa-gesa-nextg3n.com](https://www.zesa-gesa-nextg3n.com)

ARI WIDE PRODUCT RANGE



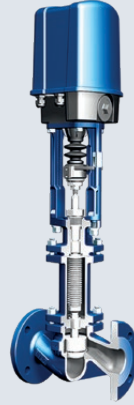
Control



Control valves
STEVI® Pro
(BR 422/462, 470/471)



STEVI® Vario
(BR 448/449)



STEVI® Smart (BR 423/463,
425/426, 440/441, 450/451)



Control without auxiliary power
PREDU®/PREDEX®/PRESO®/
TEMPROL®

Isolation



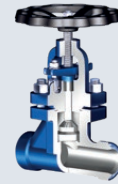
Process Valves
ZETRIX®
High Performance - Valves
ZEDOX®



Butterfly valves
ZESA®/GESA®



Bellows sealed valves
FABA® Plus, FABA® Supra I/C



Stop valves with gland seal
STOBUs®

Safety



Safety valves (DIN/EN)
SAFE



Safety valves (DIN/EN)
SAFE TCP



Safety valves (API 526, ASME)
REYCO®



Safety valves (ASME)
REYCO® RL-Series

Steam Trapping



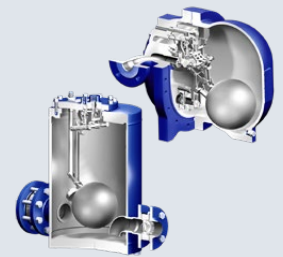
Steam traps
CONA® (mechanical ball float/
thermostatic bimetallic and
membrane/thermodynamic),
monitoring systems
CONA® Control



Manifolds
CODI® for collecting and
diverting purpose

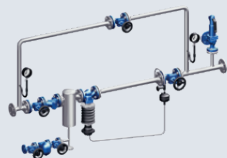


**Steam traps with multi-valving
technology** CONA® "All-in-One"
(incl. stop valve, inside strainer,
back-flow protection, drain valve)



Mechanical pump systems
CONLIFT®, CONA® P

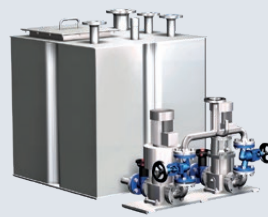
Engineered Systems



Pressure reducing station
PREsys®



Heat exchanger
ENCOsys®



Condensate return system
CORsys®



**Feedwater tank
with deaerator dome**