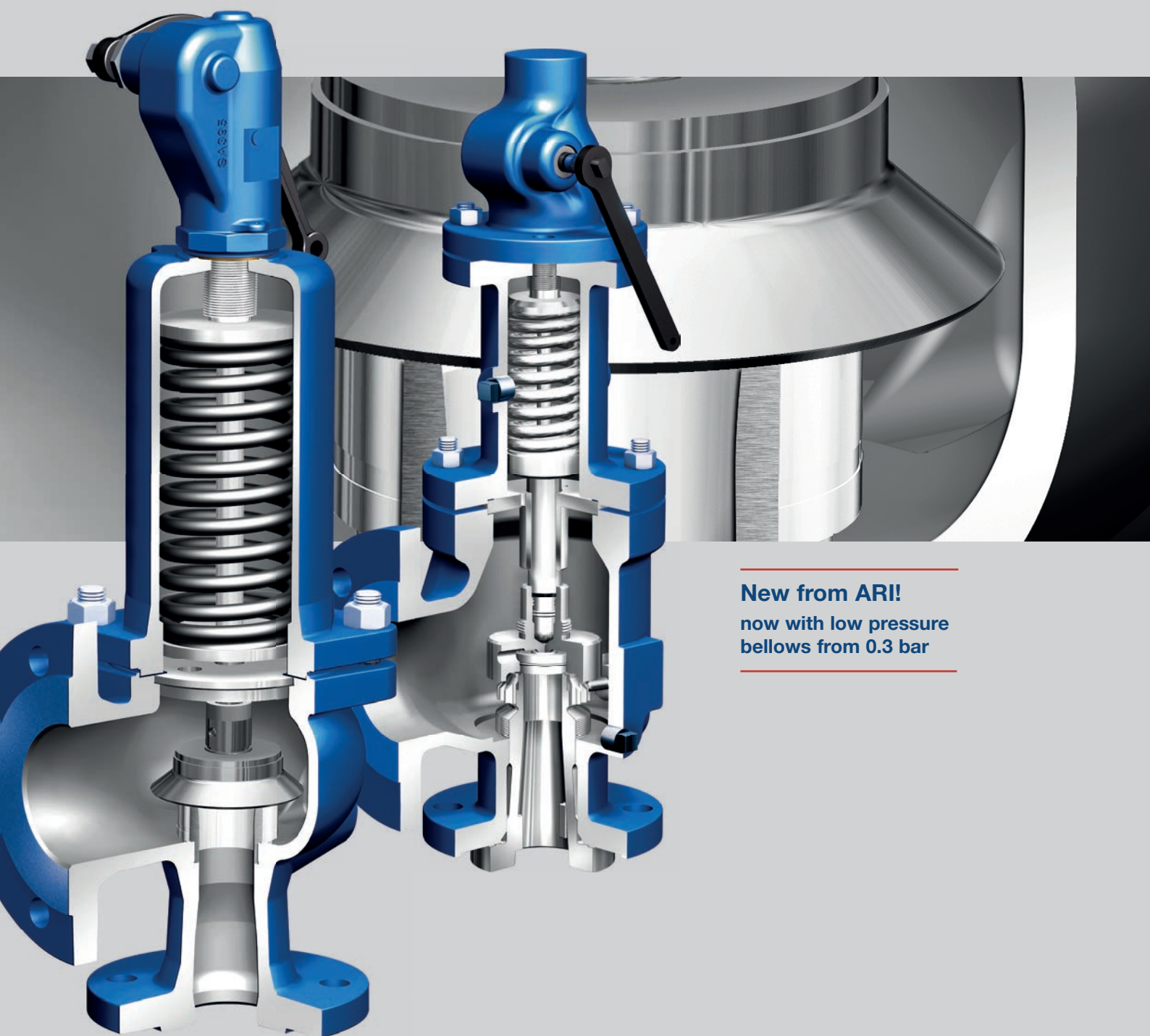


# SAFE/REYCO®

## MORE THAN 35,000 VARIATIONS IN DIN EN AND ASME



---

**New from ARI!**  
now with low pressure  
bellows from 0.3 bar

---



Your valve made by ARI®  
[ari-armaturen.com](http://ari-armaturen.com)

# SAFE

Your complete safety system!  
NEW! SAFE / SAFE SN now with SHR\*



## Greater efficiency:

- Advanced design features (raised seat in CrNi steel, better flow characteristics due to contouring of flow area as well as accurately guided plug and stem).
- Extended size range: now DN 15 – 250.
- Simplified servicing with removable lifting aid.
- Suitable for chemical applications: can be upgraded with rupture disc, stainless steel bellows seal and proximity switch.

## Greater reliability:

- Type test approved acc. to VdTÜV.
- ASME certification from the U.S. National Board.
- Balanced piston and protective rim as standard with stainless steel bellows.
- Minimum emissions (stainless steel bellows seal available as an option for SAFE/SAFE P/SAFE TC).

## Higher profitability:

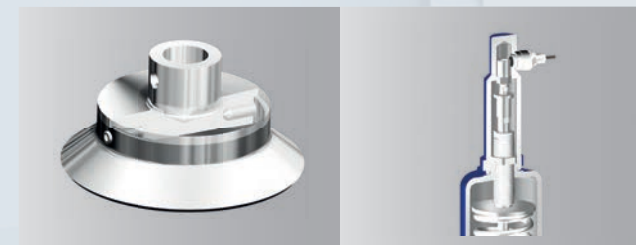
- Cost savings (extended life through hardened plug).
- Simplified servicing through removable lifting aid.
- Long lifetime, because springs with premium coating.
- Straightforward product range: economical spring selection (large, uniform set pressure ranges).
- More efficient: ARI-myValve® sizing software ensures correct / economical valve selection.
- New SAFE-Check service for testing installed safety valves (test device that works without increasing the boiler pressure or interrupting operation of the plant; absolutely no media loss).



Long lifetime because EPDM bellows and EPDM soft sealing disc avoid spring and guide corrosion in applications heating systems, water supply and water treatment.

SHR-Soft sealing: zero leakage in combination with the innovative premium soft seal (now up to +220°C) for steam and hot water.

**SHR-Soft sealing**  
**Steam-/Hot Water**  
**Resistance (SHR)**



Simplified servicing: removable lifting aid makes relapping the plug much easier.

Integrated sensorics, proximity switch; used to return the feedback signal to the control room.



# REYCO®

Complete range acc. to API 526



Certified acc.  
to ASME Code  
with UV Stamp



additionally

**CE** Certified acc. to  
EN ISO 4126-1  
(PED 2014/68 EU)

**REYCO® R-Series**  
API 526 Full Nozzle

**REYCO®**  
RL40/41-Series

**REYCO®**  
RL14-Series

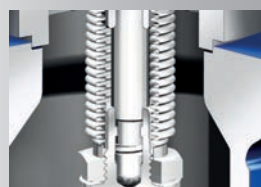
## Accurate response, flip-over plug, optimal plug guiding – up to 6000 psi (414 bar)!

- Powerful: suitable for oil and gas processing (REYCO®).
- Flexible: optionally available in Monel, Duplex, Super Duplex or Hastelloy.
- Simple handling: easy to service due to the flip-over plug (double sided sealing system).
- Durable: increased service life due to the corrosion-resistant bellows seals made of Inconel 625; the bellows also provides backpressure compensation as standard.
- Reliable and resistant: precise repeatability of the set pressure and increased service life due to the accurately guided nozzle (nozzle thread close to the seat).
- Reliable: high level of reliability due to the optimal guiding of the plug on the seat (two-piece stem).
- Flexible: multifunctional conversion in a few simple steps thanks to the modular system (standardised trim).

- Identical trim irrespective of the medium (steam, gases, liquids).
- Flexible / simple handling: broad array of applications due to the standardised O-ring soft sealing plug.
- Simple handling: identical nozzle ring for each orifice size (code letters).
- REYCO®: certified safety due to EC type examination (module B), quality assurance system (module D) and declaration of conformity acc. to PED 2014/68/EU.



Nozzle guided close to the seat – for a more accurate response. Flip-over plug – double sided sealing system assures simple handling, easy servicing and a longer service life.



Bellows available as a retrofit option. Bellows seals made of standard Inconel 625.



More options with different flanges up to ANSI 2500. Also as butt-weld end and socket weld end available.

## Technical information at a glance

### Type EN and ASME:

Direct-acting, spring-loaded

### Options:

Closed bonnet, open bonnet, with / without lifting device (gas-tight)

### Features:

EPDM bellows seal, stainless steel bellows seal, soft sealing plug, rupture disc, change over valve, proximity switch, jacketed valve

### Applications:

For relieving vapour, gas or liquid pressure from pressure vessels and steam boilers as well as for steam

### EN standard:

Nominal diameter: DN 15 – 250  
Nominal pressure: PN 16 – 100  
Set pressure: 0,2 – 100 bar

Now up to DN 250  
in stainless steel  
also with stainless  
steel bellows

### EN materials / temperatures

EN-JL1040 -10° C to +300 °C  
EN-JS1049 -10 °C to +350 °C  
1.0619+N -60 °C to +450 °C  
1.4408 -60 °C to +400 °C  
1.4581 -60 °C to +400 °C

### Requirements:

DIN EN ISO 4126, VdTÜV leaflet 100,  
TRD 421 / 721, AD2000-A2

### ASME standard

NPS 1/2"-8"  
Class ANSI 150-2500  
Set pressure: 15-6000 psi (414 bar)

### ASME materials / temperatures:

SA216WCC  
-20 °F to +800 °F (-29 °C to +427 °C)  
SA217WC6  
-20 °F to +1000 °F (-29 °C to +538 °C)  
SA352LCC  
-51 °F to +653 °F (-46 °C to +345 °C)  
SA351CF8M  
-321 °F to +1000 °F (-196 °C to +538 °C)

### Special materials

Monel, Duplex, Super Duplex and Hastelloy on request

### Requirements:

ASME Code Section XIII (formerly Section VIII Div. 1),  
API 526



# SAFE Combi

With changeover valves and / or rupture discs

New from ARI®!

**SAFE Combi-C**  
maintenance times reduced to a minimum with no need to shut down the plant.

## SAFE Combi-C / REYCO® Combi-C: The 100% standby safety – even with critical media

- Two-fold safety: the Combi-C SAFE / change-over valve always keeps a second SAFE in standby. In other words, you can test or replace a valve at any time with no pressure or media loss and without interrupting operation!
- Extra-safe thanks to the Combi-R SAFE / rupture disc combination: 100% tight (no media loss if the rupture disc bursts), stable operation (no uncontrolled plant shut-downs).



New from ARI®!

SAFE Combi-R – zero leakage allows the use of certain types of media which tend to harden or become sticky when in contact with the atmosphere. Protects the safety valve against corrosion.

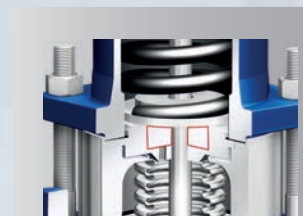
# SAFE AND SAFE-P NOW WITH LOW PRESSURE BELLOW

Balancing bellows now also from 0.3 bar

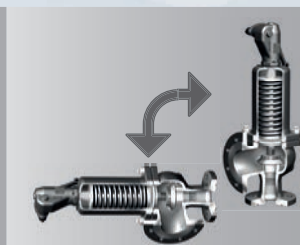
New from ARI!  
now with low pressure  
bellows from 0.3 bar



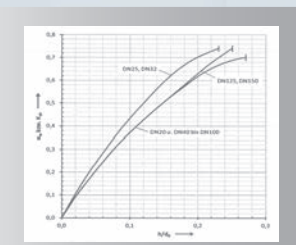
- Reliably build up back pressures compensation incl. redundant balanced piston
- Safer due to back pressure compensation in applications with main blow-out pipe
- Low pressure balanced bellows for blow-down systems in chemical industries.
- No CDPD differential pressure adjustment necessary.
- Redundant with primer- and secondary sealing
- Protection of the spring room and guiding against dirt particles and aggressive media. Avoid spring and guide corrosion.
- Reduction of fire hazards in thermal oil systems.
- Compliance with stricter emission limits in systems with critical media in accordance with EN ISO 15848-1, TA-Luft, VDI2440
- Also compliance with the specifications from the applications of energy supply e.g. diesel, petrol, bioethanol, biodiesel, biogases / methane and hydrogen.



More safety because stainless steel bellows DN 15 - DN 100 with redundant balanced piston as standard (EN-standard).



Horizontal installation for compact systems now also available for SAFE and SAFE-P



Lift limitation also in the pressure range of 0.2-3.5 bar



# ARI® PRODUCT DIVERSITY

## Control



**Control valves**  
STEVI® Pro  
(BR 422/462, 470/471)



STEVI® Vario  
(BR 448/449)



STEVI® Smart (BR 423/463,  
425/426, 440/441, 450/451)



**Control without auxiliary power**  
PREDU®/PREDEX®/  
PRESO®/TEMPROL®

## Isolation



**Process Valves**  
ZETRIX®  
High Performance-Valves  
ZEDOX®



**Butterfly valves**  
ZESA®/GESA®



**Bellows sealed valves**  
FABA® Plus, FABA® Supra I/C



**Stop valves with gland seal**  
STOBU®

## Safety



**Safety valves (DIN)**  
SAFE



**Safety valves**  
SAFE TCP



**Safety valves (API 526)**  
REYCO®



**Safety valves (ANSI)**  
REYCO® RL-Series

## Steam trapping



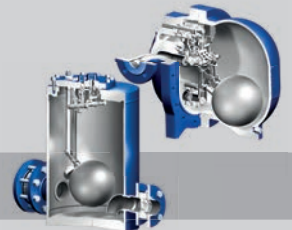
**Steam traps CONA®**  
(mechanical ball float /  
thermostatic bimetallic and  
membrane / thermodynamic),  
**monitoring systems**  
CONA® Control



**Manifolds**  
CODI® for collecting  
and diverting purpose



**Steam traps with multi-  
valving technology CONA®**  
"All-in-One" (incl. stop valve,  
inside strainer, back-flow  
protection, drain valve)



**Mechanical pump systems**  
CONLIFT®, CONA® P

## Application technology



**Pressure reducing station**  
PREsys®



**Heat exchanger**  
ENCOsys®



**Condensate return system**  
CORsys®



**Feedwater tank  
with deaerator dome**

**Profit from diversity made by ARI®.**  
**Please don't hesitate to ask for more information!**



Your valve made by ARI®  
ari-armaturen.com